

# ALAN J. PLATTUS

PROFESSOR, YALE UNIVERSITY

FOUNDING DIRECTOR, YALE URBAN DESIGN WORKSHOP

<i>SCHOLARSHIP</i>	PUBLICATIONS	02
	PUBLIC LECTURES	03
<i>TEACHING</i>	INTRODUCTION TO URBAN DESIGN	04
	CHINA STUDIO	06
	LEARNING FROM SWEDEN	08
<i>SERVICE</i>	COLLABORATING WITH DWIGHT	11
	TOWN PLANNING IN CONNECTICUT	14
	JORDAN RIVER PEACE PARK	16
	RESILIENT BRIDGEPORT	18

# SCHOLARSHIP

## SELECTED PUBLICATIONS

*Re-reading Perspecta, An Anthology of the First Thirty Issues*, edited by Peggy Deamer, Alan Plattus, and Robert A.M. Stern, MIT Press, 2006.

*Time-Saver Standards for Urban Design*, edited by Donald Watson, Alan Plattus, and Robert Shibley, McGraw-Hill, 2003.

*The American Vitruvius: An Architect's Handbook of Civic Art*, Werner Hegemann and Elbert Peets, edited and with an Introduction by Alan J. Plattus, Princeton Architectural Press, 1988.

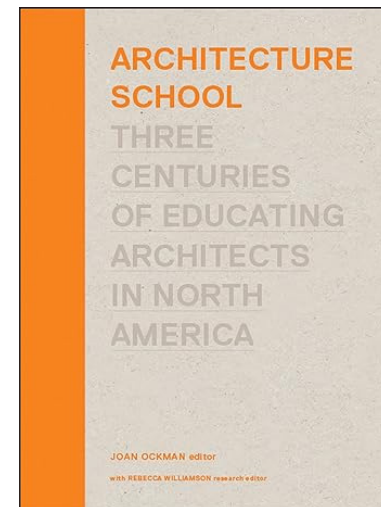
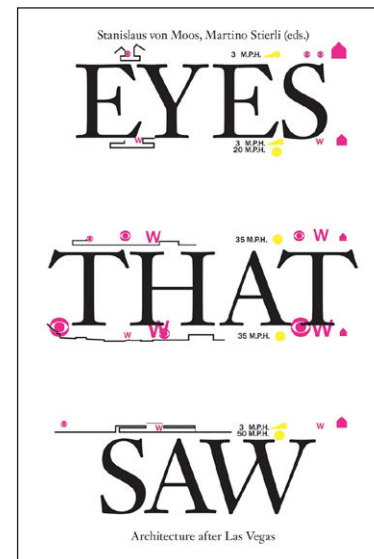
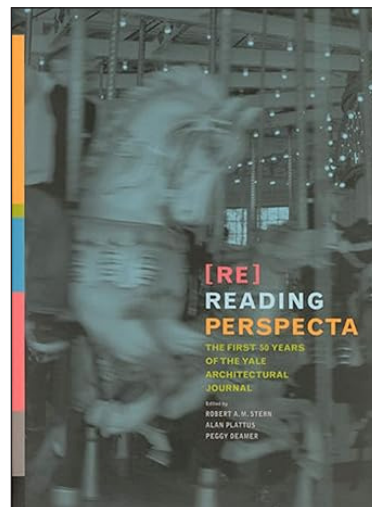
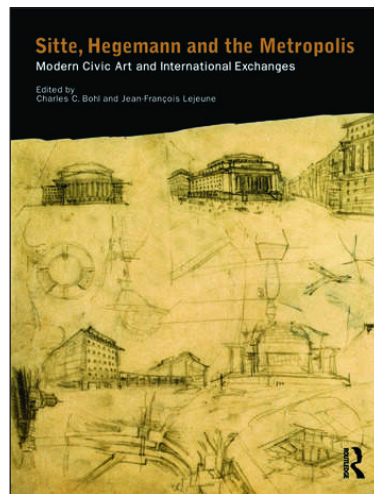
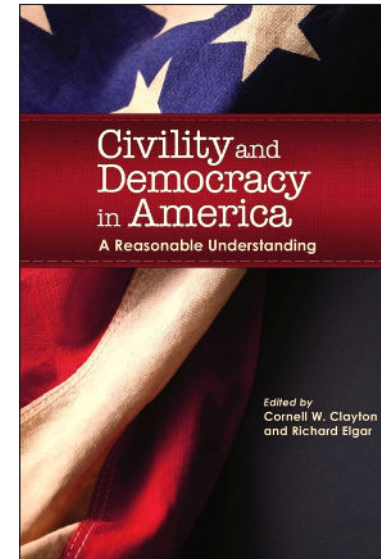
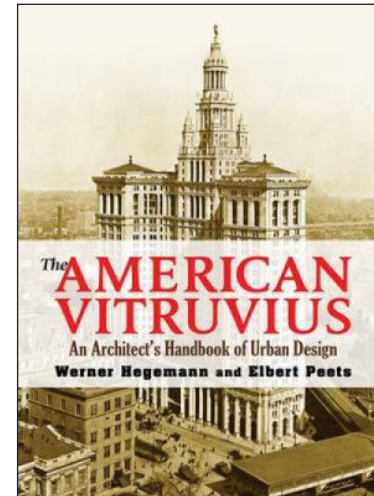
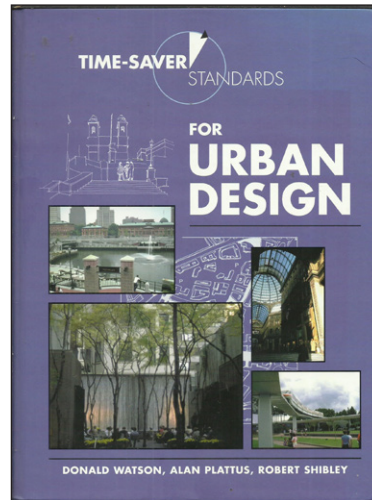
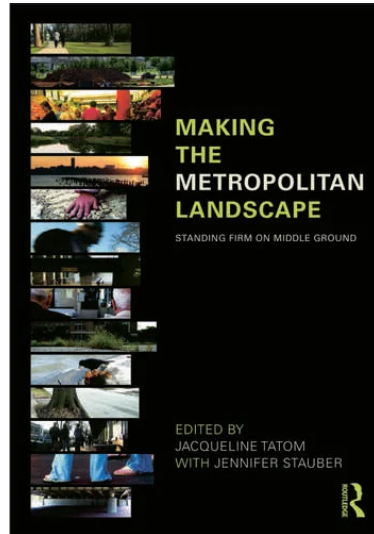
"The Flatbed Facades of Venturi and Scott Brown," in *Eyes That Saw: Architecture After Las Vegas*, Edited by Stanislaus von Moos, Martino Sterli, 2014.

"Shared Difference: Citizenship and Civility in American Architecture and Urbanism," in *Civility and Democracy in America: A Reasonable Understanding*, Cornell W. Clayton and Richard Elgar, eds., Washington State University Press, 2012.

"The Book(s) on the Drafting Room Table," in *Architecture School: Three Centuries of Educating Architects in North America*, Joan Ockman and Rebecca Williamson, eds., MIT Press, 2012.

"Citizenship and Architecture: Notes on the Order of the American City," in *Making the Metropolitan Landscape: Standing Firm on Middle Ground*, Jacqueline Tatom and Jennifer Stauber, eds., Routledge, 2009.

"The Pack Donkey's Revenge: Sitte and Modernist Urbanism," in *Sitte, Hegemann and the Metropolis: Modern Civic Art and International Exchanges*, Charles Bohl and Jean-Francois Lejeune, eds., Routledge, 2009.



# SCHOLARSHIP

## PUBLIC LECTURES

Throughout his career, professor Plattus has been invited to deliver lectures and keynote presentations at both local and international community and institutional conferences and programs including Connecticut Bar Association, Planning and Zoning Section, New Haven Preservation Trust, Mattatuk Museum in Waterbury, CT, Barnum Museum in Bridgeport, CT, Van Alen Institute, Cooper-Hewitt Museum, Academy of Sciences of the Czech Republic, Stanford University, University of Pennsylvania, Brown University, University of California, Berkeley, Tulane University, Syracuse University, Johns Hopkins University, Tsinghua University, and Yale University, amongst others.



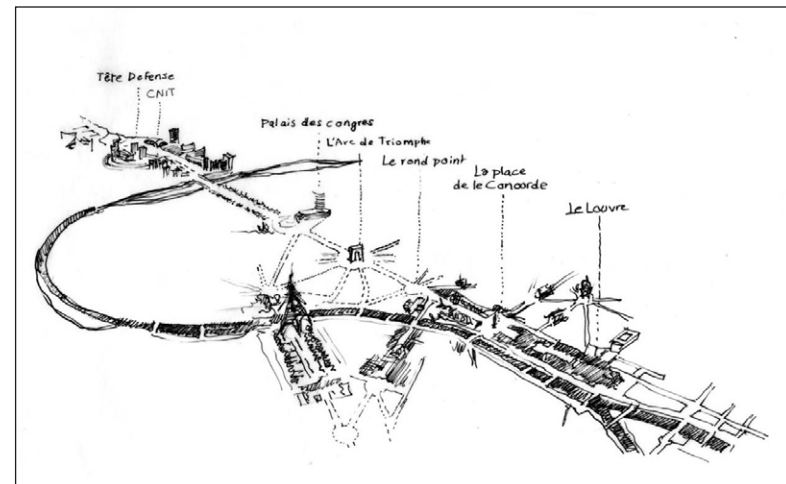
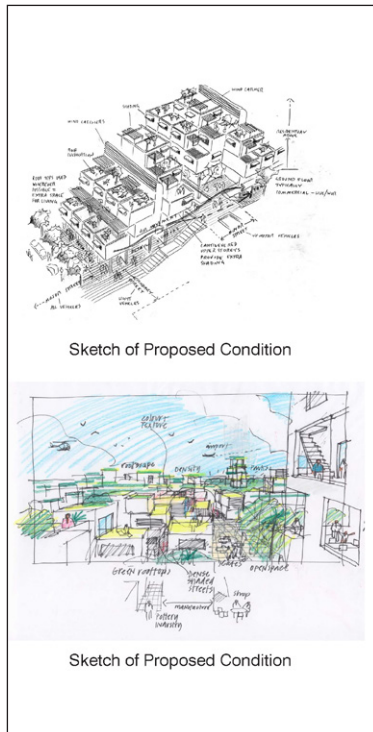
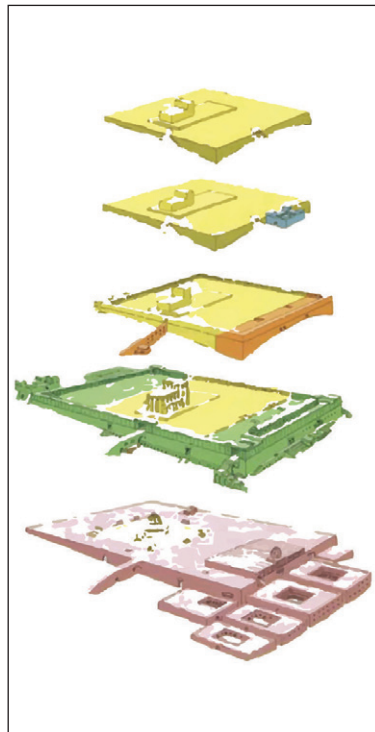
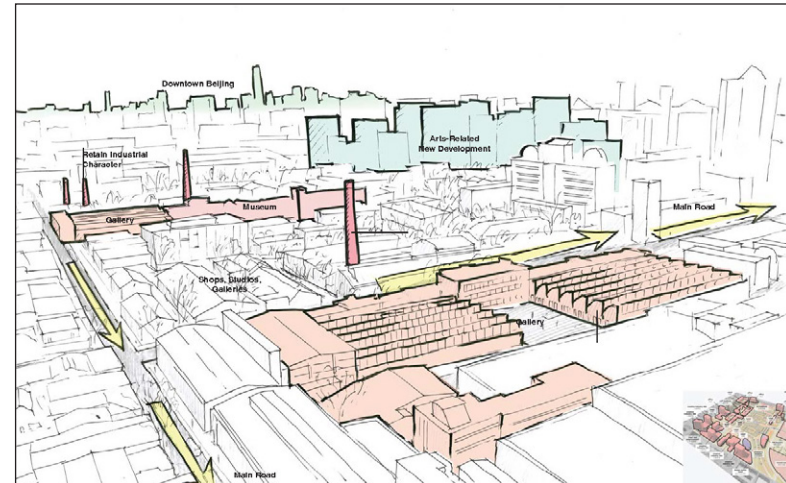
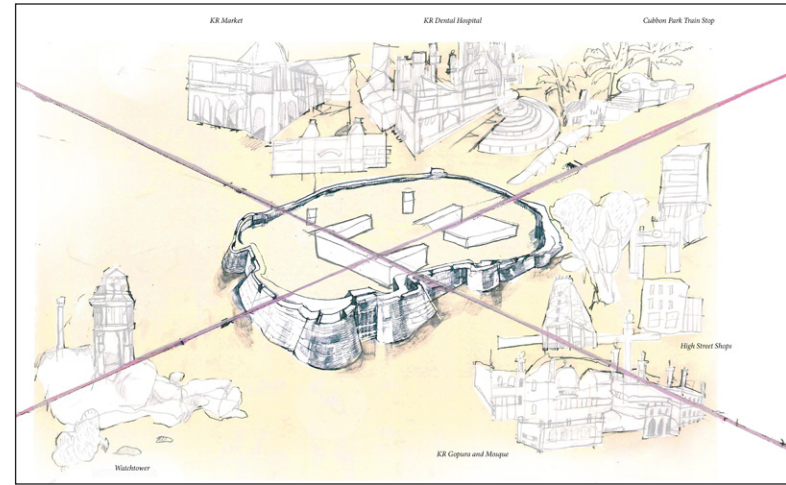
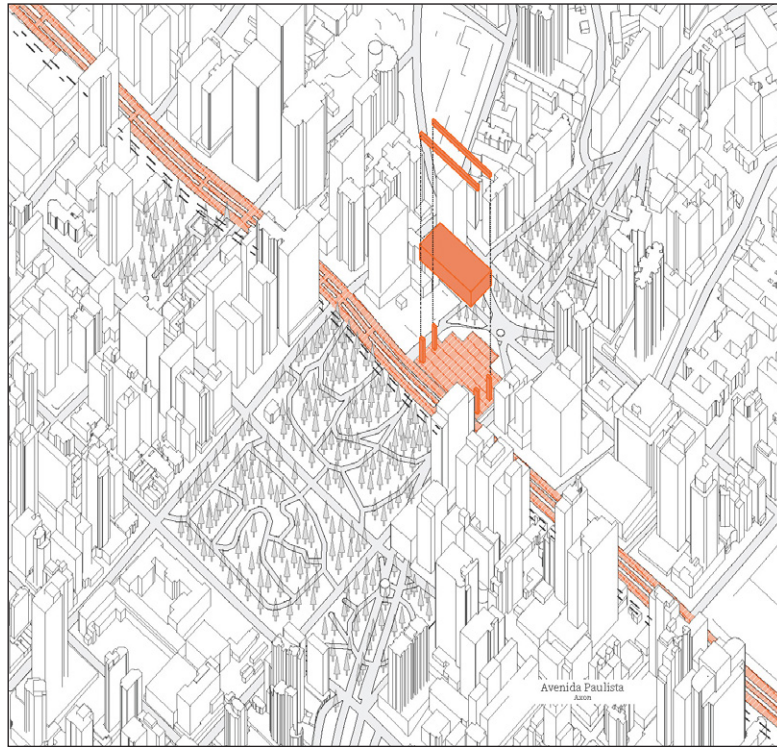
# TEACHING

## INTRODUCTION TO URBAN DESIGN

1999-present

For over 24 years, Professor Plattus has taught *Introduction to Urban Design* at Yale School of Architecture. This course provides an introduction to the theory and practice of urban design within the context of the broader fields of urbanism and urban history.

The lectures include case studies of specific cities and exemplary urban design projects, as well as the general issues and principles of city design suggested by those case studies, including consideration of their implications for contemporary practice.



1	4
	5
2	3
	6

### Student Work:

1. Nathan Garcia & Baolin Shen
2. Apoorva Khanolkar & Matthew Kabala
3. Katie Lau & David Schaengold
4. Rosa Cogdon & Gioia Connell
5. Megan Tan & Thomas Mahon
6. Robert Yoos & Nasim Rowshanabadi

# TEACHING

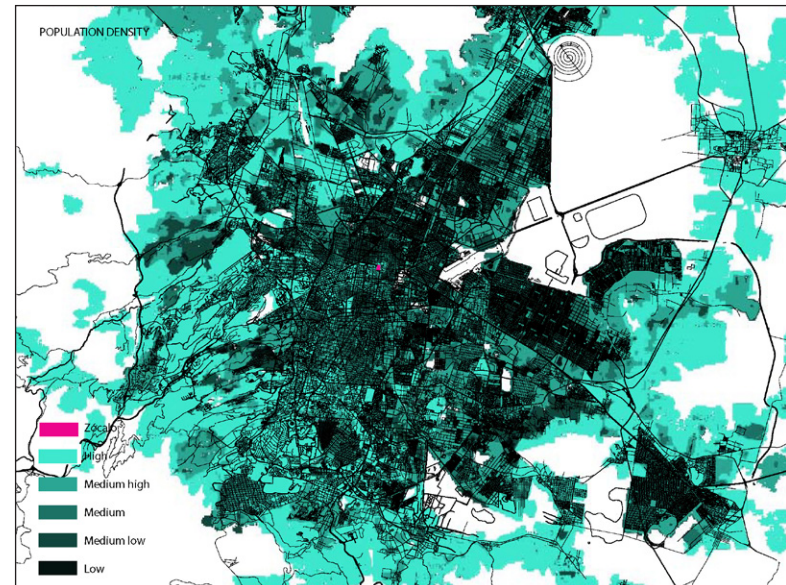
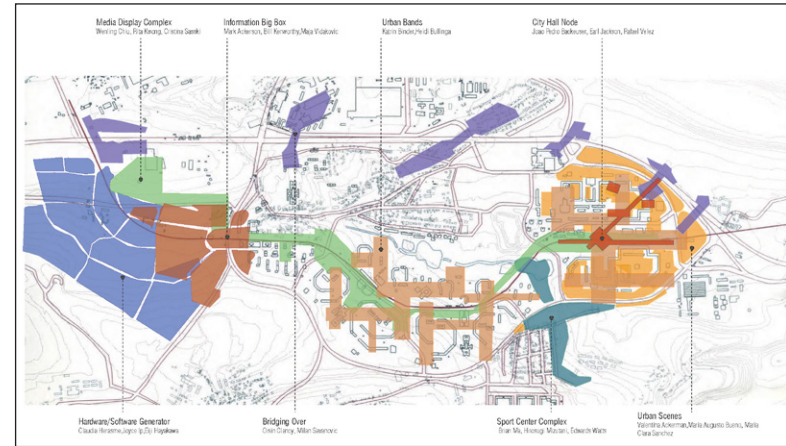
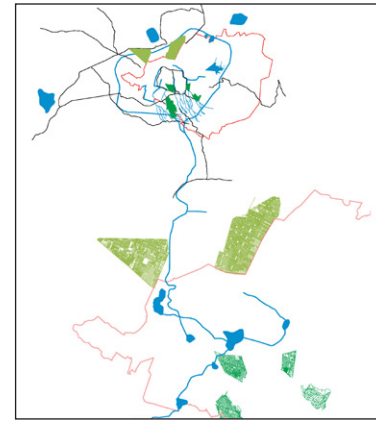
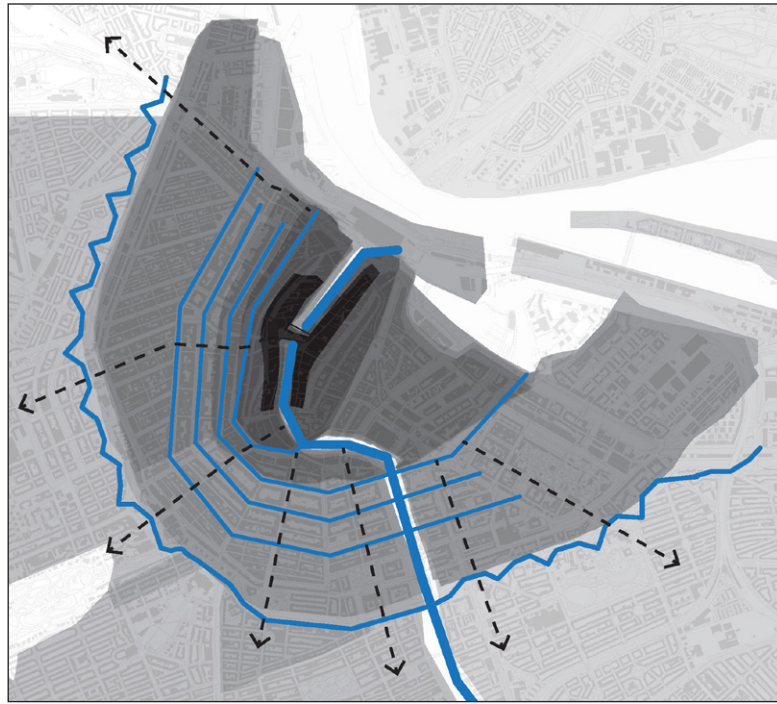
## INTRODUCTION TO URBAN DESIGN

1999-present

Role: Course Instructor

Collaborators:

6 co-instructors



1	3	4
	5	
2	6	

### Student Work:

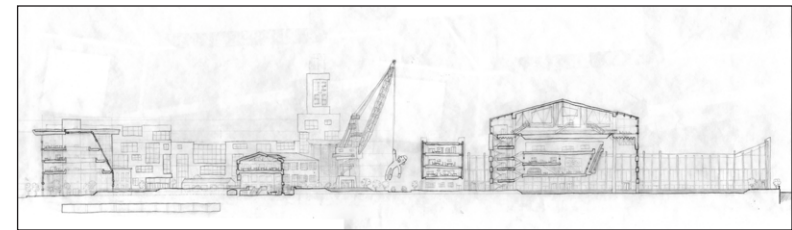
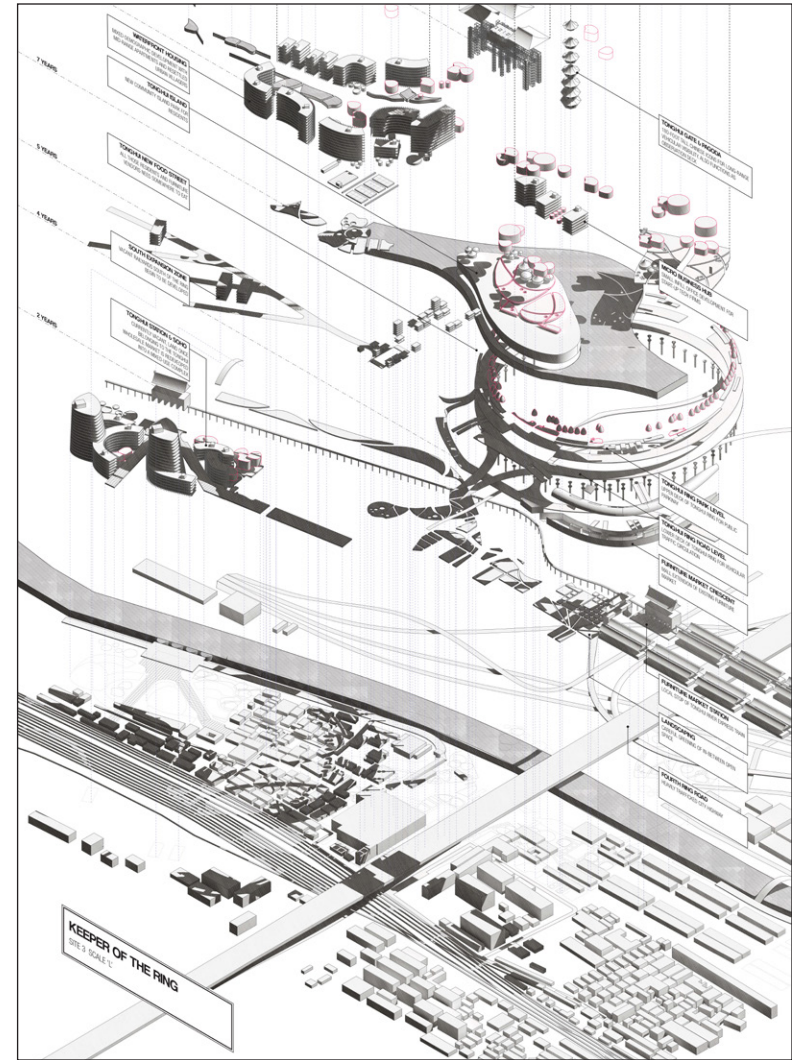
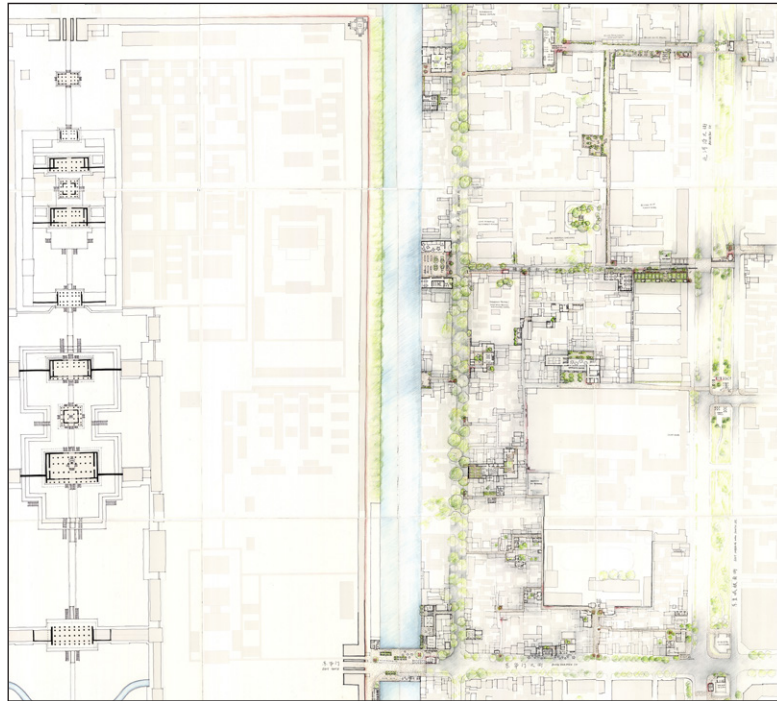
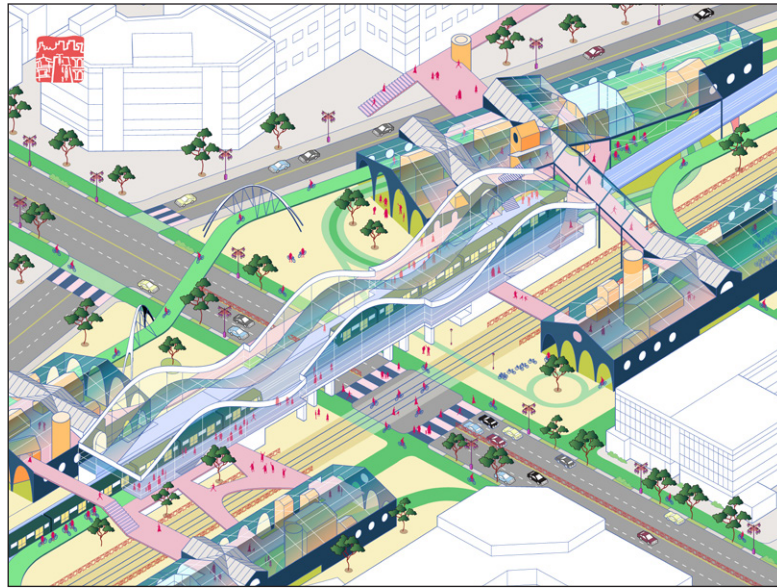
1. Tess McNamara & Paul Rasmussen
2. Graham Brindle & Rob Cornelissen
3. Matt Wagstaffe & Luke Studebaker
4. Brittany Olivari & Rashidbek Muydinov
5. Robert Yoos & Nasim Rowshanabadi
6. Ava Amirahmadi & Cecily Ng

# TEACHING

## CHINA STUDIO

1999-2016

Professor Plattus led a 17-year series of joint China Studios, first in collaboration with University of Hong Kong and Tongji University sited in Shanghai, and later with Tsinghua University, sited in Beijing. The advanced design studio brought Yale students to mainland China to collaborate with Chinese counterparts in understanding the radical contemporary problems of urban development, preservation and heritage in that rapidly changing environment.



1	3
2	4
5	

### Student Work:

1. Winy Tan & Cynthia Hsu
2. Shuo Nancy Liz
3. Anne Ma & John Wan
4. Mahdi Sabbagh & Jonathan Sun
5. Jeremy Leonard, Gordon Schissler & Maddy Sembler



# TEACHING

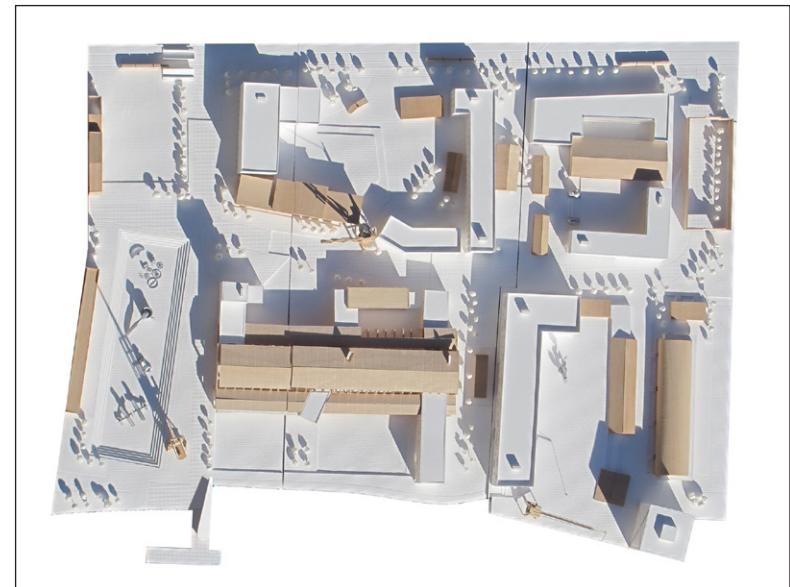
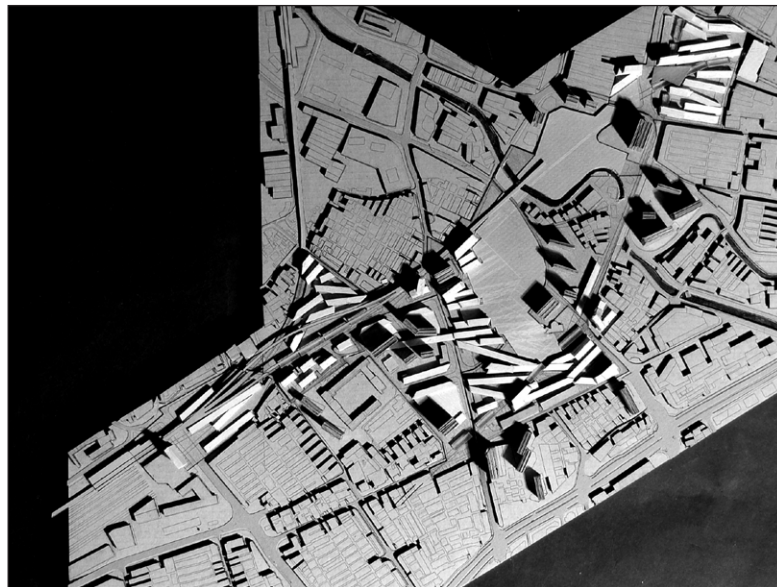
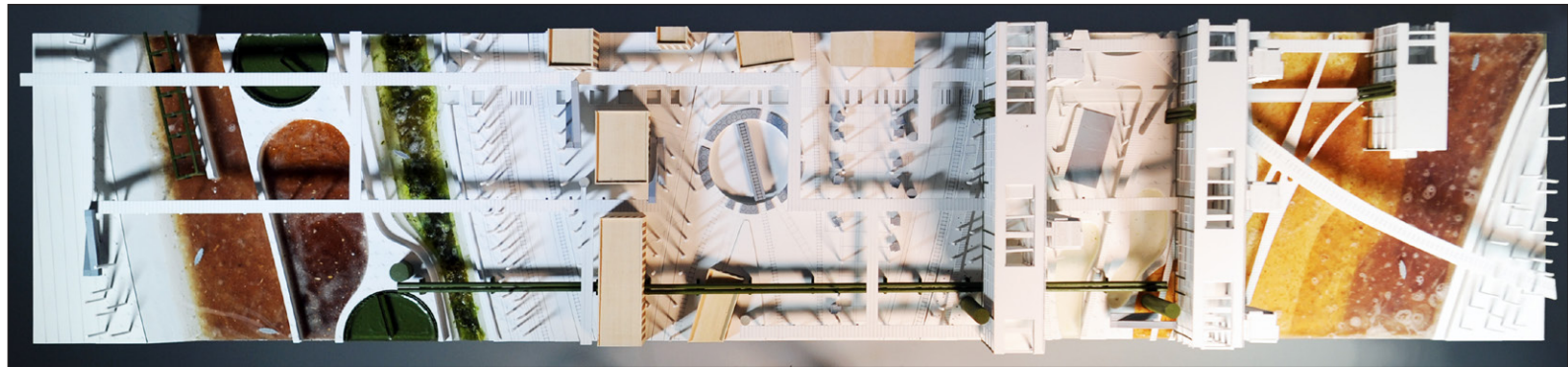
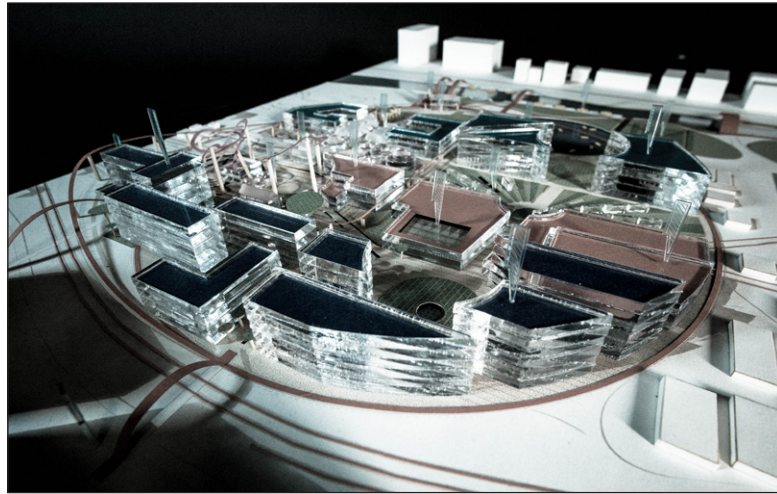
## CHINA STUDIO 1999-2016

Role: Course Instructor

Collaborators:

1 co-instructor

3 partner university



1	2
3	
4	5

### Student Work:

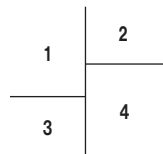
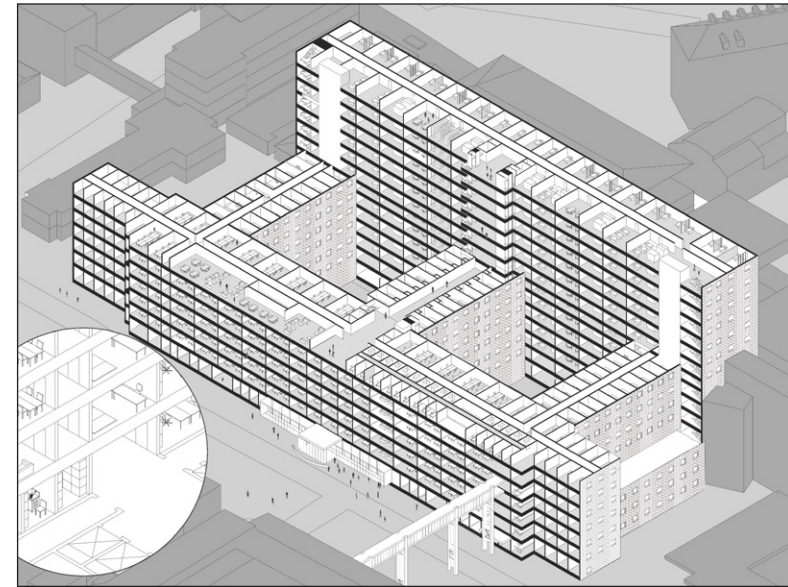
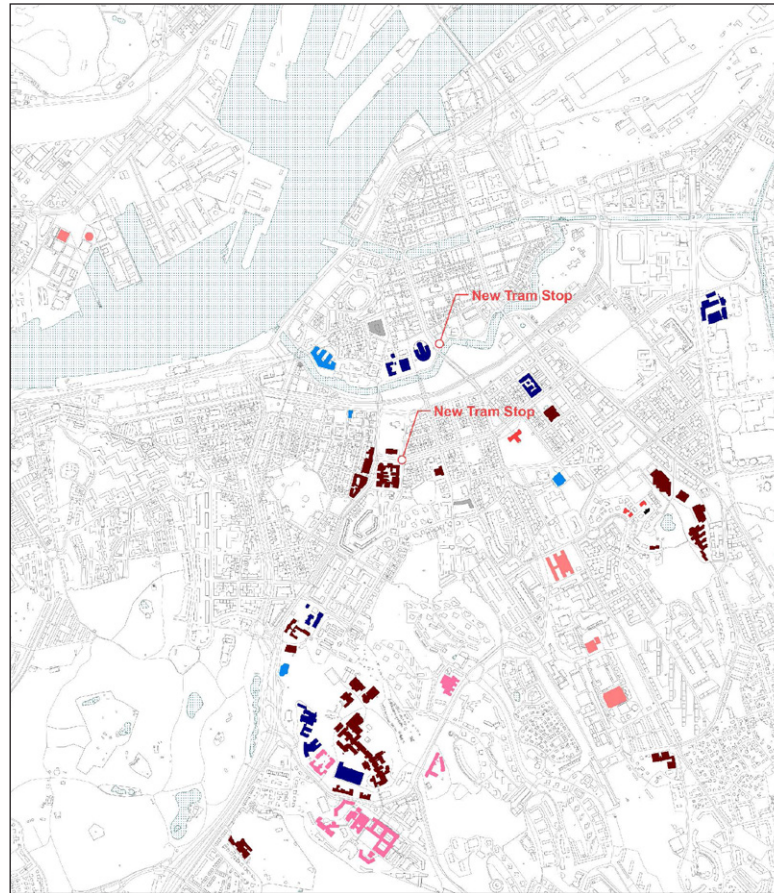
1. Anne Ma & John Wan
2. Shuo Nancy Liz
3. Christopher Beardsley & Andrei Harwell
4. Jacob Dugopolski
5. Mahdi Sabbagh & Jonathan Sun

# TEACHING

## LEARNING FROM SWEDEN Urban Atlas

2018-present

Since 2018, Professor Plattus led students in the Summer Program, based at, and in collaboration with, the Department of Architecture and Civil Engineering at Chalmers University of Technology, to engage in a series of close readings of characteristic sites in Gothenburg. Aimed at producing a thick description of those sites, the studio interrogates the often superficial site analysis of typical urban development projects.



### Student Work:

1. Deo Deiparine, Miriam Dreiblatt, Thomas Mahon & Manasi Punde
2. Gioia Connell, Kelley Johnson & Jackson Lindsay
3. Jincy Kunnatharayil, Erin Hyelin Kim, Samantha Monge Kaser & Katrinia Yin
4. Varoon Kelekar, Dhruvin Shah, Colin Sutherland & Matthew Wagstaffe



# TEACHING

## LEARNING FROM SWEDEN Advanced Design Studio

2019

In a subsequent Advanced Design Studio, students are challenged to build on the research provided by the Summer Program and to apply that research to the design of future development. The studio explores specific sites in relation to research on climate challenges of sea level rise, coastal adaptation, food production and supply chain, mobility and infrastructure, urban public health, and social equity in affordable housing and education.

Role: Course Instructor

Collaborators:

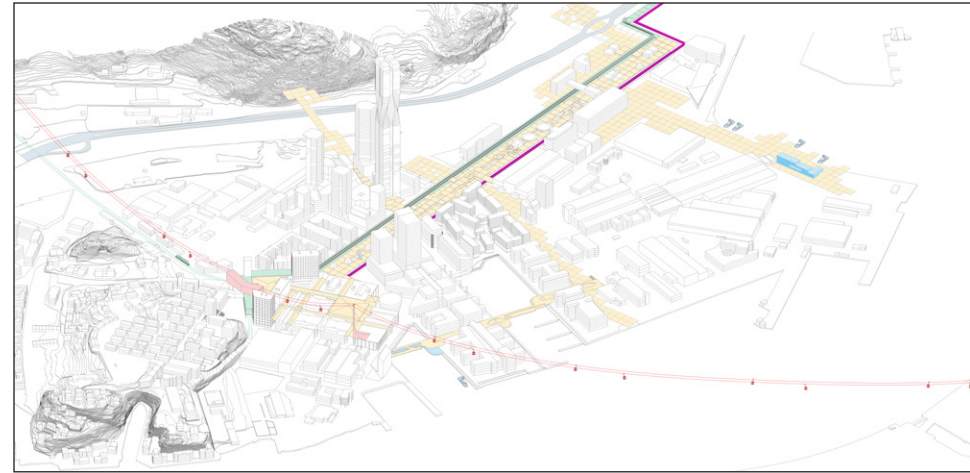
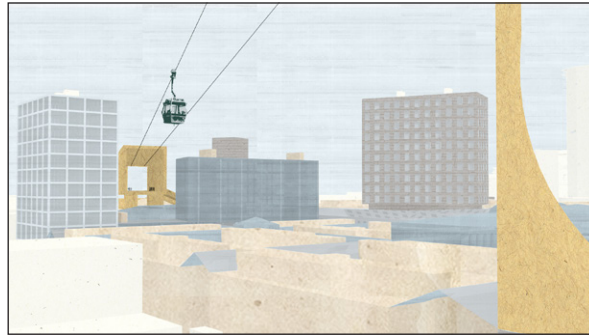
1 co-instructor

1 partner university

1	3
2	4
	5

Student Work:

1. Arghaven Taheri, Daoru Wang & David Scurry
2. Serena Ching & Kay Yang
3. Arghaven Taheri, Daoru Wang & David Scurry
4. Rishab Jain & Zack Lenza
5. Gordon Jiang & Shuang Chen

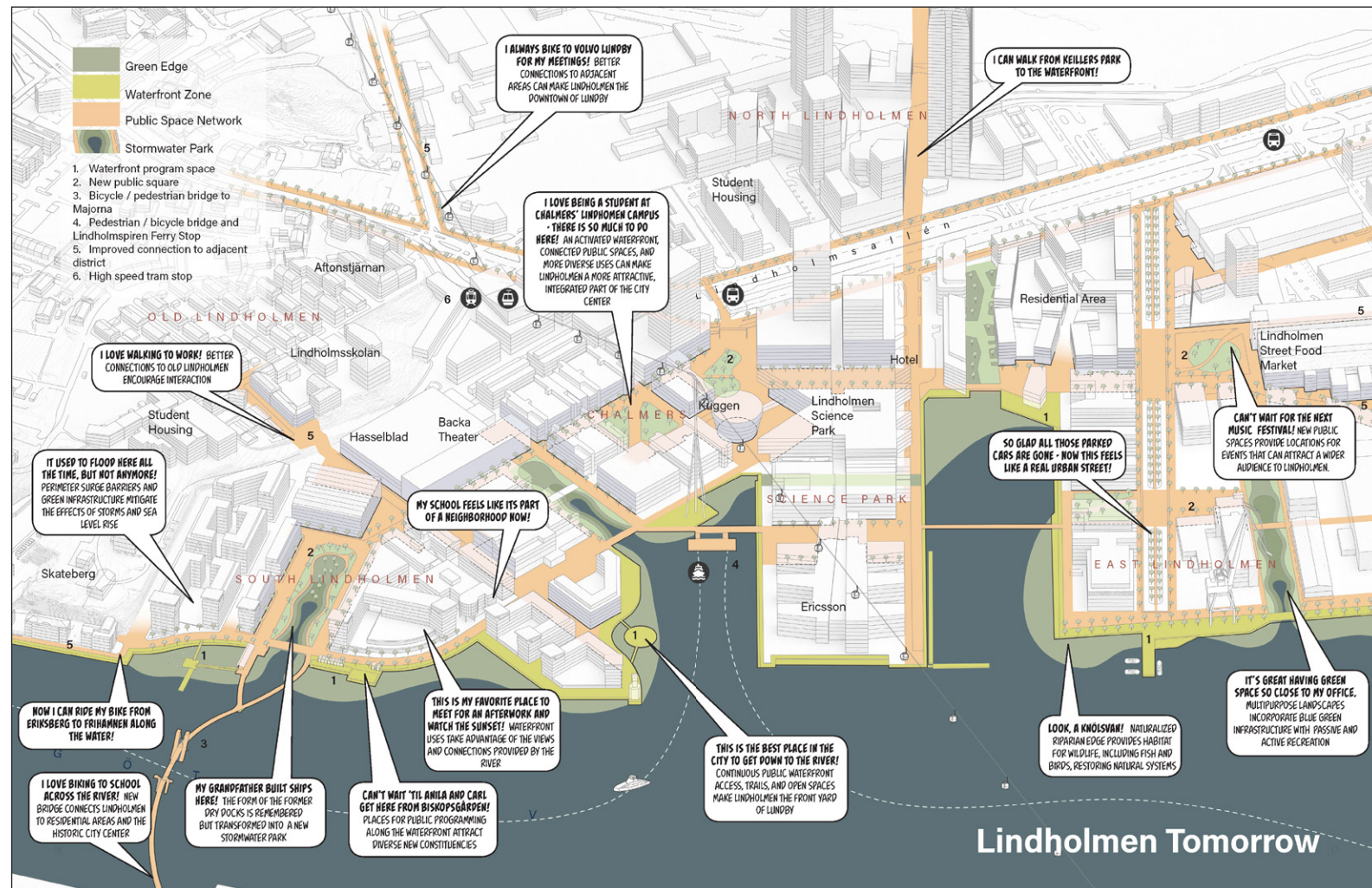
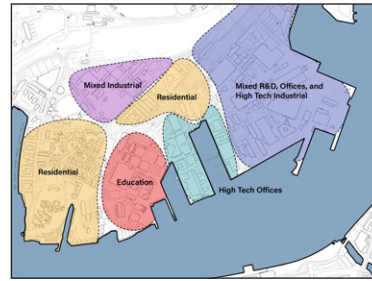
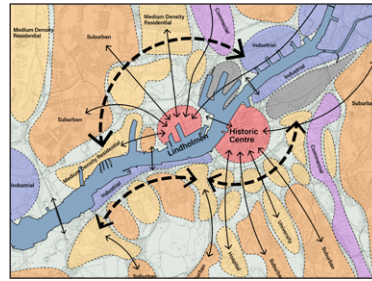


# TEACHING

## LEARNING FROM SWEDEN DesignCase Lindholmen

2020

These explorations led to a design research report on Lindholmen, the port area of Gothenburg, conducted by the team at YUDW headed by Professor Plattus. The analysis suggests that Lindholmen's unique history of river-front landscape, shipbuilding, technical education, and cutting edge research, are a potential source of strengthened local identity that can blend global trends and best practices in urban development with a highly visible and distinctive placemaking approach.



Role: Project Director

Collaborator:

2 faculty, funded by school

2 postgraduate fellows, funded by school

3 student fellow, paid hourly by school

Lindholmen Tomorrow

# SERVICE

## COLLABORATING WITH DWIGHT Community Charrette

1995

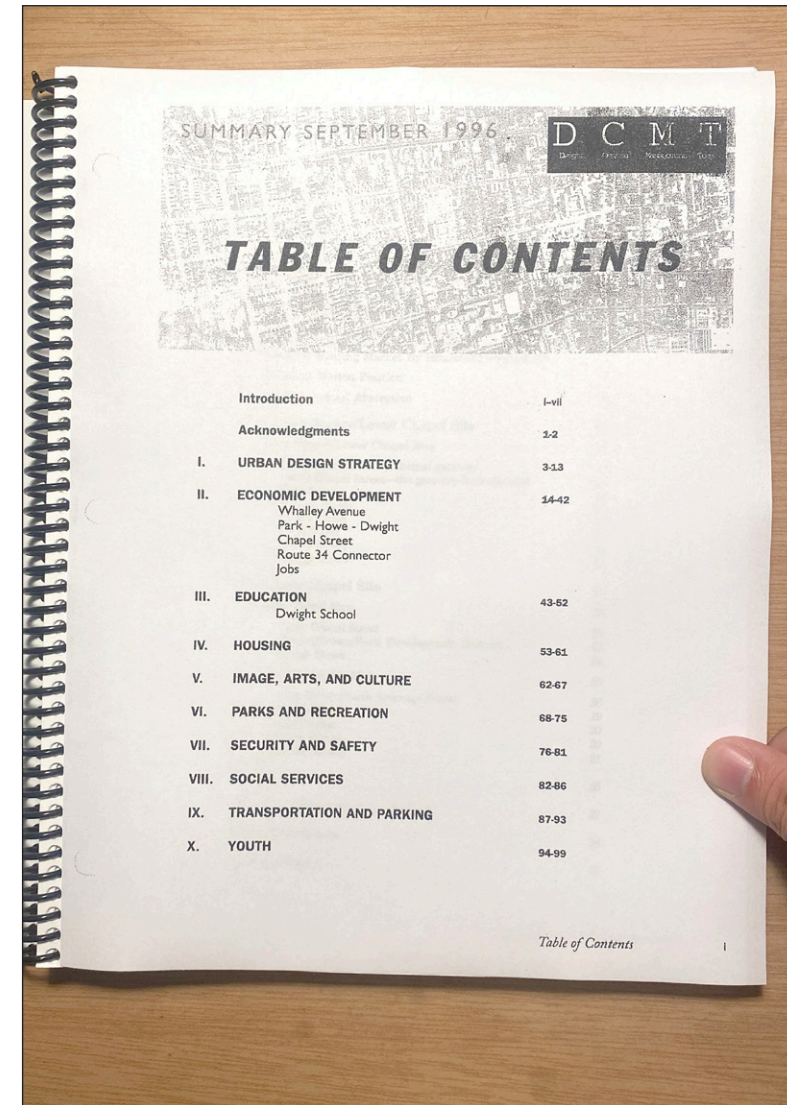
With financial support from a HUD COPC grant, Professor Plattus led the YUDW team to launch its collaboration with the Dwight neighborhood, a first-ring inner city neighborhood that borders Yale University, by organizing a major four-day community design workshop. Working with the Dwight Community Management Team (DCMT), students and faculty manned tables, met with over 250 community members, discussed priorities, and made sketches to help residents imagine the future of the neighborhood.



Role: Project Director

Collaborators:

- Dwight Community Management Team
- Yale Law School
- Partnership to Enhance Neighborhoods
- Hospital of St. Raphael
- New Haven City Hall
- 1 faculty
- 10 students

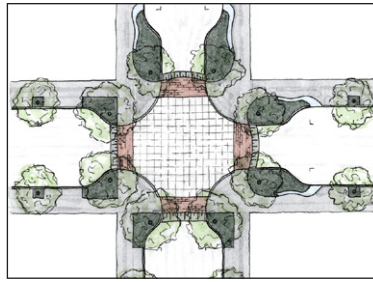


# SERVICE

## COLLABORATING WITH DWIGHT Neighborhood Plan

1996

Professor Plattus led the efforts to develop a neighborhood plan based on the charrette, which was formally adopted by the DCMT. Housed in a loose-leaf binder, the plan had concrete and actionable priorities, and could evolve over time by adding and revising sections. The newly formed Greater Dwight Development Corporation (GDCC) became the neighborhood's development arm.



Role: Project Director

Collaborators:

Greater Dwight Development Corporation

Dwight Community Management Team

Yale Law School

1 faculty

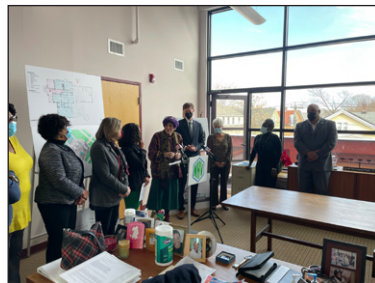
10 students

## SERVICE

### COLLABORATING WITH DWIGHT Built and Current Projects

1996

Since 1995, Professor Plattus led the collaboration between the YUDW and GDDC to accomplish many of the goals that were articulated in the Plan, including the development of a neighborhood grocery store, a shared community facility in the form of an addition to the neighborhood elementary school, and new day-care center to serve neighborhood families.



Left: Montessori on Edgewood

Role: Faculty Director

Collaborators:

Greater Dwight Development Corporation, financed the project

8 students

1 executive architect

Right: Montessori on Maple

Role: Director

Collaborators:

Greater Dwight Development Corporation, financed the project

8 students, paid hourly by school

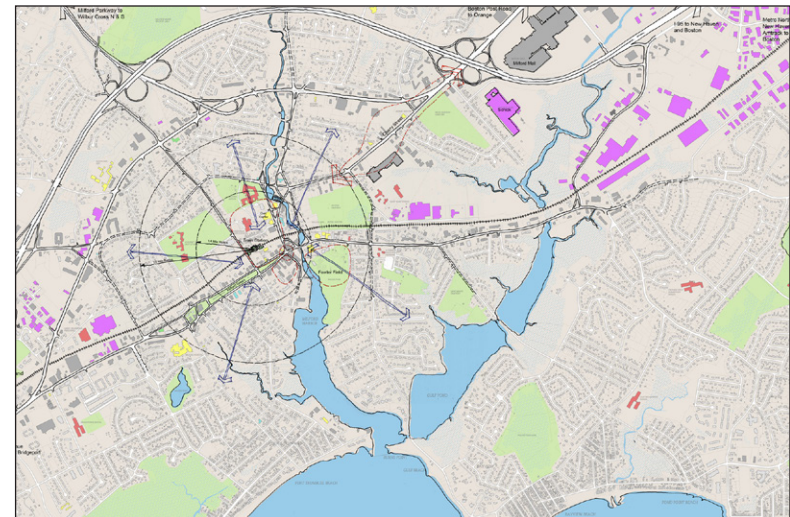
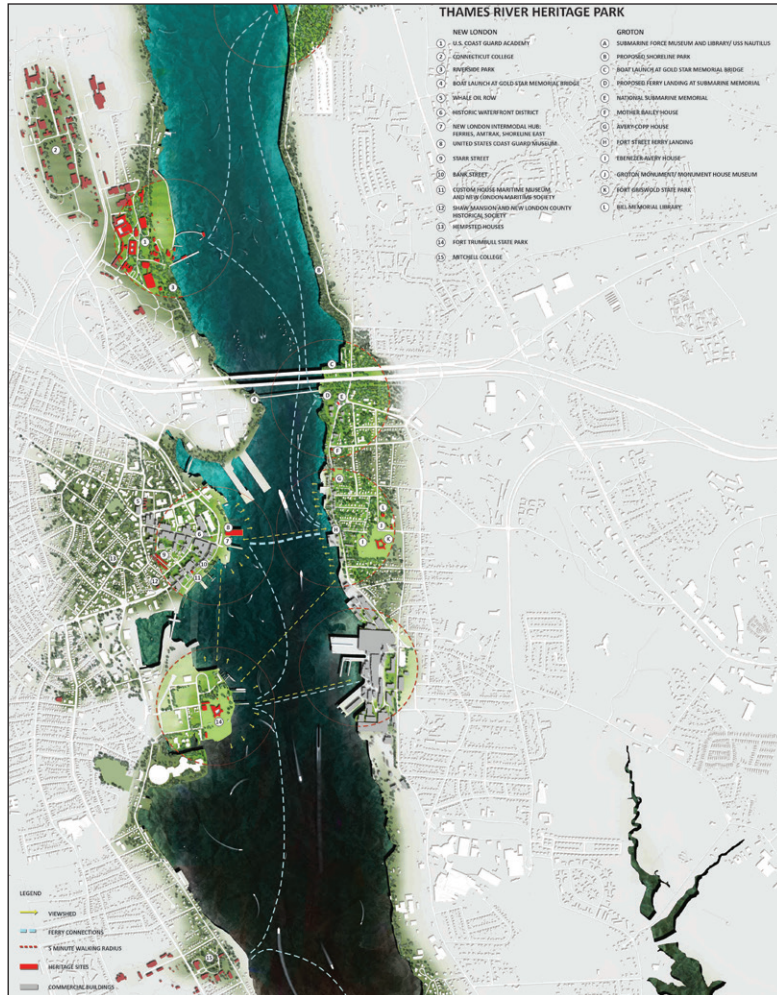
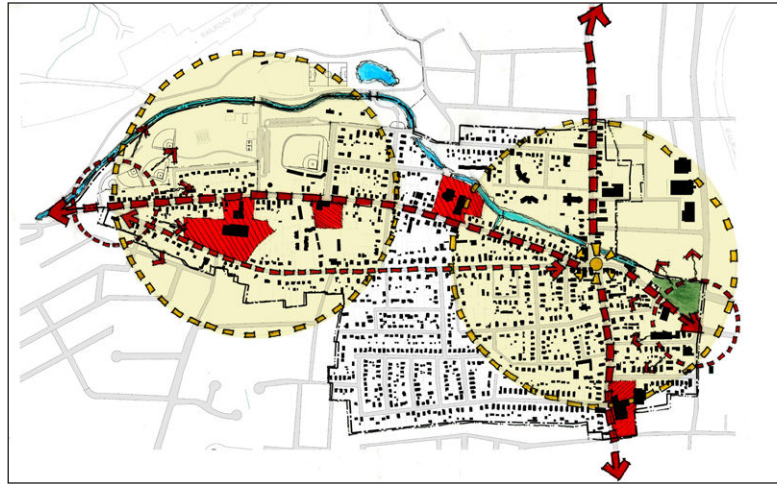
1 faculty, paid by school

# SERVICE

## TOWN PLANNING IN CONNECTICUT

1993-present

Under the leadership of Professor Plattus, the YUDW has established itself as a clinical center that combines teaching, mentorship, and public service, with projects in 38 of the 169 towns in Connecticut since its formalization in 1993. These processes often involve community design charrettes leading towards planning reports that offer a structured list of suggestions to improve living quality and climate resilience.



# SERVICE

## TOWN PLANNING IN CONNECTICUT

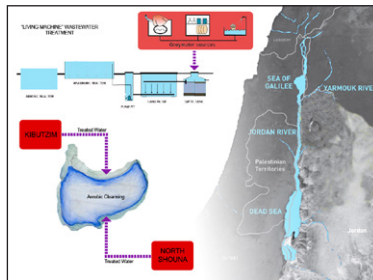
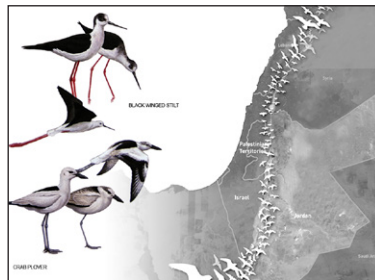
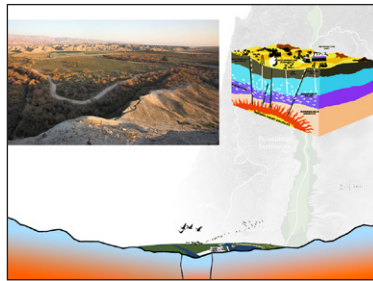
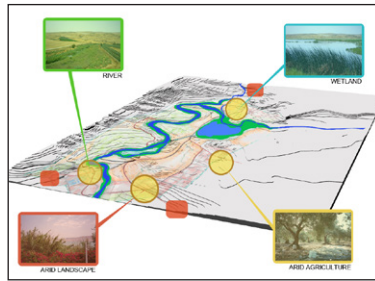
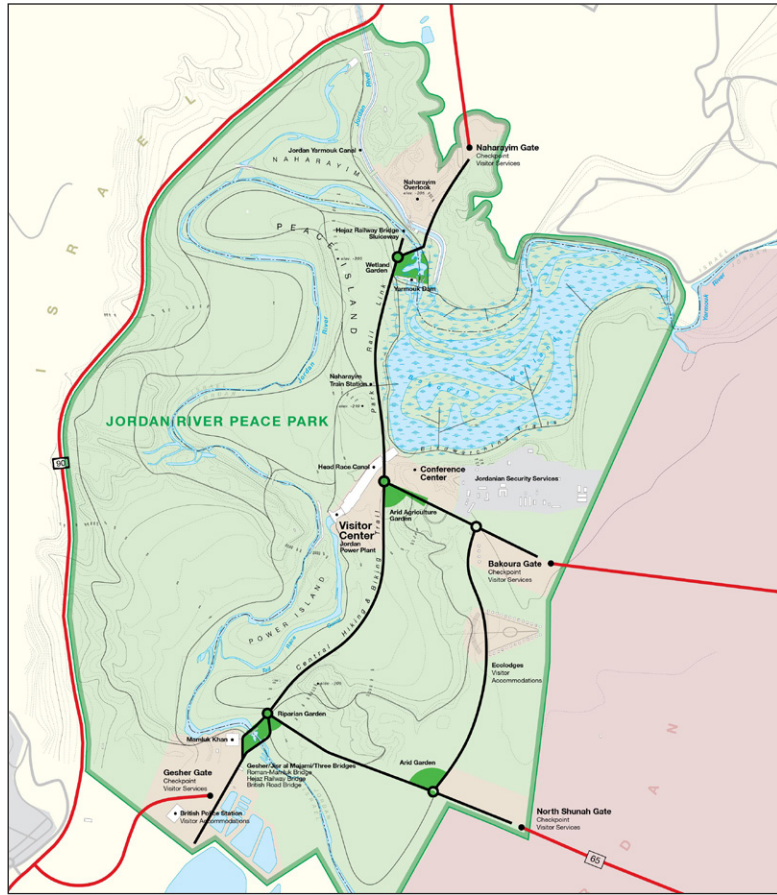
1993-present

Most projects are collaborations with community groups and local governments. Students often play key roles throughout the design and planning process, and are paid hourly for their work.



JORDAN RIVER PEACE PARK  
2008

Invited by Friends of the Earth Middle East, Professor Plattus led the YUDW team to conduct an international design charrette developing a framework plan for a proposed 1200-acre Peace Park on a historic site at the confluence of the Yarmouk and Jordan Rivers, just south of the Sea of Galilee. The team worked closely with an unprecedented collective of Jordanian, Palestinian and Israeli architects, professionals and students in a five-day workshop that prepared an ambitious plan for the future development of the site as a destination for heritage and eco-tourism, economic development, and peaceful encounters for all the people of the region.



2 Pioneering researcher Joan Steitz has won America's largest award in medicine, the Albany Medical Center Prize.

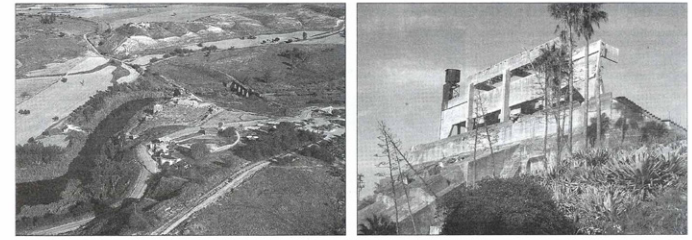
5 Yale architecture students are helping to transform an abandoned site into a Peace Park in the Middle East.

Inside This issue includes a special supplement about the many activities that comprise "Summertime at Yale."

# YALE Bulletin & CALENDAR

www.yale.edu/opa/yb&c MAY 16, 2008 FOUR-WEEK ISSUE Vol. 36, No. 29

YALE BULLETIN & CALENDAR MAY 16, 2008 5



The proposed Peace Park will be located at the "Three Bridges" site, a historical crossing point on the now-near-dry Jordan River (shown in an aerial view, at left). The park will encompass the abandoned Rutenberg hydroelectric power station, pictured at right.

## Architecture students helping to design Mideast Peace Park

Faculty and students from Yale School of Architecture teamed up with their Jordanian, Palestinian and Israeli counterparts to create a vision for the first cross-border Peace Park to be established in the Middle East.

On May 12, the joint teams visited the location of the proposed park, about six miles south of the southern tip of the Sea of Galilee, at the confluence of the Yarmouk and Jordan Rivers. The park area will include the former Rutenberg hydroelectric power station and the "Three Bridges" site, a historical crossing point of the River Jordan, where a 2,000-year-old Roman bridge, an Ottoman Railway bridge and a British Mandate road bridge still span the River today.

No person, train or vehicle has crossed the river at this site since the 1948 Arab-Israeli war.

The idea for the park was conceived by Muneeth Mubhar, the Jordanian director of Friends of the Earth Middle East, a unique Jordanian, Israeli and Palestinian organization for peace and the environment.

Speaking before the gathering, Mubhar said, "Sixty years after the hydroelectric power plant was destroyed in the 1948 war,

almost to the day, a historic event designed to help advance a cross-border peace park on both banks of the River Jordan will take place."

"The goal of the event," he noted, "is to develop ideas on how to recreate a wetland from the dry lake bed into a bird sanctuary, convert the old power station into a visitor's center, the old workers' homes into eco-lodges and renovate the bridges so they can be used again."

Alan Plattus, professor of architecture and urban planning at Yale, is director of the project, and Andrei Harwell, a critic at the School of Architecture, is the project manager. The two led a charrette — a four-day design event — where participants produced an array of ideas and designs as to how the area could be revitalized. The group included faculty and students selected by the Yale Urban Design Workshop, and architects and students from Jordan, Israel and the Palestinian Authority. Plattus, who heads the Yale Urban Design Workshop in New Haven, has many years of experience leading charrettes and guiding disparate groups with a variety of interests toward a consensus on development plans in their communities.

This event follows the completion by Friends of the Earth Middle East of a \$110,000 feasibility study of the park.

"The park," said Gidon Bromberg, the Israeli director of Friends of the Earth Middle East and a 2007 Yale World Fellow, "is the support of the local Jordanian and Israeli President Richard C. Levin said, "We are pleased that Yale will take a leadership role in this inspiring endeavor. The project reflects Yale's commitment to support sustainable development at every level and to promote creative dialog across cultural and geographical borders."

Plattus, speaking on behalf of the participating Yale faculty and students, said: "We are excited to be part of this unprecedented initiative, and to explore the ways in which design can be a positive force not only in environmental renewal and sustainability, but also in the building of collaborative relationships among peoples with a common history and environment exemplified by the Jordan River region."

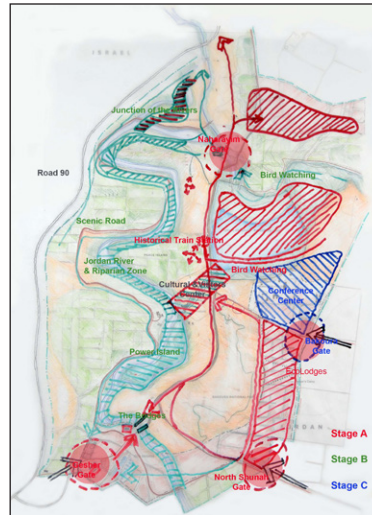
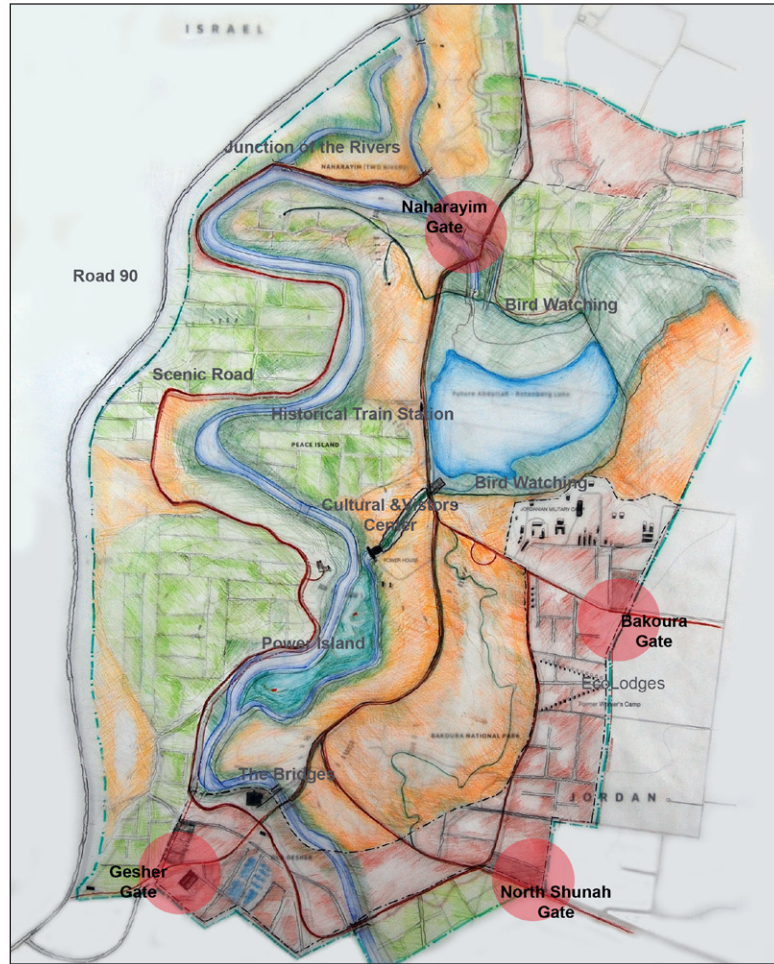
The charrette itself was held both on the Peace Island site and at a nearby site in Jordan. The project design will be presented in Amman and Jerusalem in the upcoming week.

Role: Project Coordinator  
Collaborators:  
Diana Balmori, Hilary Sample, James Axley, Lasha Brown, Gabrielle Ho, Ben Smoot  
EcoPeace Middle East

# SERVICE

## JORDAN RIVER PEACE PARK 2008

The plan was presented by the team at press conferences in both Amman and Jerusalem, and has been the subject of press coverage around the world, as well as a documentary film produced by Yale undergraduates. The collaboration between EcoPeace and the YUDW continues, with efforts to advance the project with local and national leaders in the region and supporters abroad.

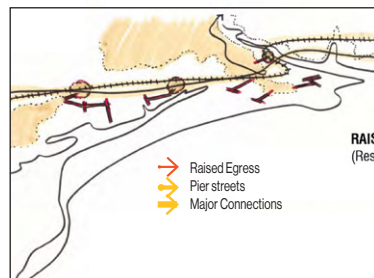
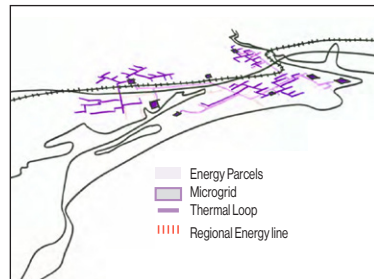
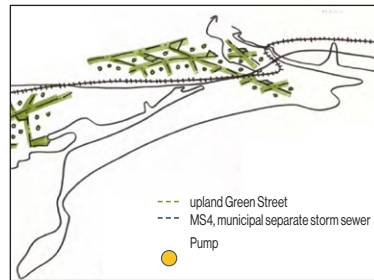
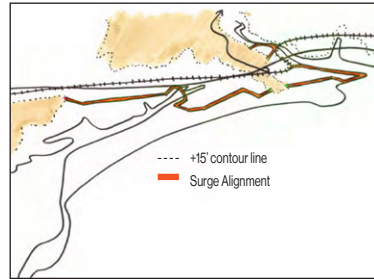
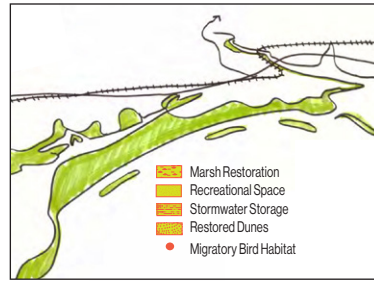


# SERVICE

## RESILIENT BRIDGEPORT

2014-present

With the support of HUD, Professor Platus led a multidisciplinary team to work with the city of Bridgeport, Connecticut, including New Orleans-based Waggoner & Ball Architecture/Environment, the YUDW, and the Dutch engineering firm Arcadis. With a grant award of \$10,000,000, the team is developing a strategic plan to reduce flood risk and improve resilience across Bridgeport's most vulnerable areas. To demonstrate this new resilience framework, the team will design and build a pilot project in Bridgeport's South End that will serve as a catalyst for the full implementation of broader flood protection and resilience strategies.



Funding: Grant  
Role: Project Coordinator  
Collaborators:  
Waggoner & Ball  
Reed Hildebrand  
WSP Global  
Arcadis  
7 students, paid hourly

# SERVICE

## RESILIENT BRIDGEPORT 2014-present

Through innovative thinking about the design of the city's streets, public spaces, infrastructure networks, and architecture, the project provides a framework for the adaptations required to meet the challenges presented by climate change and sea level rise, including the exacerbated effects of storms, wave surge, and heavy rainfall. Based on an extensive engagement with state and municipal agencies, institutions, nonprofits, business owners, residents and other stakeholders, the project establishes a vision for a Bridgeport that is vibrant, safe and flexible, with new opportunities for development and recreation, as well as an attractive blue-green public realm.



# SERVICE

## RESILIENT BRIDGEPORT 2014-present

The pilot project is a combination of green and gray infrastructure components integrated within new, multifunctional public spaces, to facilitate a more resilient neighborhood during chronic and acute storm events. This investment centers around a new Stormwater Park south of a raised egress corridor along an extended Johnson Street. A study also proposes to elevate Iranistan Ave. by employing a range of green infrastructure strategies to frame water and move it away from the street surface. It provides dry egress, and large amounts of under-street water storage and conveyance, while producing a new signature blue-green public realm for this part of the city.

